

Tools Required:

15/16 - 1 1/8" reamer

- for tight fit sleeves or pin mounts

Permatex #64000 or 64040

- sleeve retainer

- for loose fit bushings

Arbor Press/Standard Press

Drill

C4 Delrin Configuration

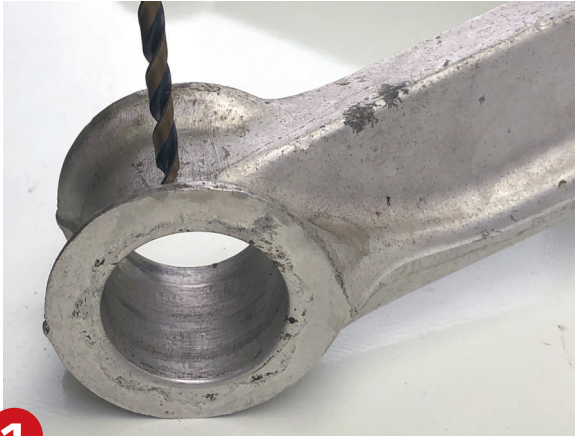
VS-96000



- 1** Upper Small Bushings (2) with sleeves (2)
- 2** Upper Large Bushings (2) with sleeves (2)
- 3** Lower Offset Bushings (8) with Sleeves (4)
- 4** Bushing retaining kit
 - Drill, Tap, (4) retaining screws

- All sleeves **MUST** rotate. If not, the bushing needs to be reamed due to variances in factory control arms.
- Bushings **MUST NOT** turn in the control arm. If it does, you need to use Permatex to keep it in place and/or the retaining kit provided.

Lower Control Arms



- 1** Drill from the bottom of the control arm for the retaining screw. Only 2 holes in each arm need to be drilled. One per side.



- 2** We recommend using a cutting fluid when tapping the control arm after drilling the hole.



- 3** Clock the bushing to the desired location. For max camber, the thickest part of the bushing should be toward the ball joint. Bushings should be a light press fit. Use channel locks to rotate bushings if the two do not line up when installing the sleeve.



- 4** Use loctite on the retaining screw once the bushings are installed in their final positions.



Top view of the offset bushing with sleeve

Upper Control Arms

Parts Listing

(2) large bushings - A (6) large washers (4) sleeves
(2) small bushings - B (2) small washers (4) nyloc nuts



Larger ID Bushing Hole Smaller ID Bushing Hole



1

Install cross shaft through large hole first, then place large washer on cross shaft as shown above.

Test fit the aluminum sleeve on the cross-shaft. If the aluminum sleeve is a little sloppy, apply a layer of aluminum foil between the sleeve and the cross-shaft.



2

Install small washer over shaft and through the control arm. It's a snug fit, you may need to tap in with a screw driver or punch.



3

Install bushings next. The smaller bushings goes with the small washer, which should be towards the rear of the car. Place in press and press bushing in. Light press fit.



4

Install final two washers and nyloc nuts. Tighten nuts until the arm is snug but moves freely. If you over tighten, the bushings will start to bind up.